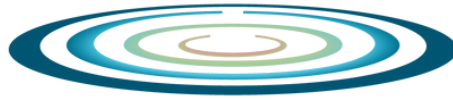


# Glenelg Hopkins



CMA



## In this edition:

- Success for our Victorian Landcare Award winners
- EC5 projects celebrated
- 2024 Victorian Landcare Grants announced
- Do you have the grasslands we are looking for?
- CMA staff volunteer for local charities
- Celebrating staff milestones
- Showcasing the CMA to the next gen of NRM

Glenelg Hopkins



CMA

[www.ghcma.vic.gov.au](http://www.ghcma.vic.gov.au)

Telephone: (03) 5571 2526

Email: [ghcma@ghcma.vic.gov.au](mailto:ghcma@ghcma.vic.gov.au)

## Celebrating local Landcare success and will we see ewe at Sheepvention?

What a month it has been for Landcare! Its great to see so many of our amazing Landcarers in the region get recognised at the Victorian Landcare Awards for all their tireless work to improve the Glenelg Hopkins region.

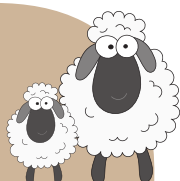
To top it off the 2024 Landcare grants were just announced so we can see more amazing projects get delivered across the region. A full list of these projects can be found in this newsletter.

Our annual pilgrimage to the region's largest agricultural event – Sheepvention, is taking place again this year, and we look forward to seeing lots of people to discuss some of our past and future projects.

**Adam Bester**  
CEO  
Glenelg Hopkins CMA

**Find us at Sheepvention**  
**August 4 & 5**  
**Hamilton Showgrounds**

**Site 108-109**  
**in the Producers Market**  
**& Innovations Hub**  
**AKA the new shed**



## CMA NEWS:

# Congratulations to our Landcare champions!

The Victorian Landcare Awards are held every two years to celebrate and recognise the outstanding work done by our Landcarers and environmental volunteers in award categories that acknowledge the excellence of individuals, groups, networks, First Nations people, schools and other organisations in caring for Victoria's land, water and biodiversity.

The 2024 Victorian Landcare awards took place on Thursday 18th July and Landcare champions from our region took home some of the highest award honours on the night.

Congratulations to all the winners, but a very special congratulations to Lisa, the Blackwell family and Kevin for the recognition of their significant and ongoing landcare work in our region.



## EC5 projects wind up - find out what we've achieved!



Find us  
at Sheepvention  
to view our videos!

Site 108-109 in the  
new shed

Glenelg Hopkins CMA has just wound up its projects funded under what is known as EC5 - a program of activities funded by the Victorian Government known as Environmental Contributions.

Environmental contributions are funds collected from water supply authorities under the *Water Industry Act 1994*.

Environmental contributions are one of the most important funding tools assisting Victorians to manage water sustainably, and a means of accounting for the environmental costs associated with the provision of water-based services.

Environmental contribution 5 (EC5), the fifth tranche of the environmental contribution, began 1 July 2020 and is expected to raise \$693.9 million over 4 years to fund continued delivery of the government's long-term water plan, Water for Victoria.

A series of videos have been created showcasing the people, partners and outputs of these projects. You can view these online on our [website](#), our [YouTube channel](#) or on the big screen at on our site at Sheepvention in Hamilton on August 4 and 5.

## 2024 Victorian Landcare grant recipients announced

The 2024 Victorian Landcare Grants to support Landcare and environmental volunteer groups and networks with on-ground works, education and capacity building projects that protect and restore our land and natural environment have been announced.

A total of \$3.62 million was available for project and support grants across Victoria in 2024.

The following Landcare groups within our region received grant funding for projects, with another 18 groups receiving \$500 support grants.

RECIPIENT	PROJECT TITLE	FUNDING AMOUNT	LOCAL GOVERNMENT AREA
Dunkeld Arboretum Development Group Inc.	Dunkeld Arboretum Grassland Project	\$8,124	Southern Grampians Shire
Warrnambool Coastcare Landcare Network Inc	Linking Reserves with wildlife corridors and shelterbelts at landscape scale.	\$19,171	Warrnambool City
Beyond Bolac Catchment Action Group	The Lake Bolac Ecosystem - Community Forum	\$13,000	Ararat Rural City
Friends of Yatmerone Reserve Inc	Documenting the history and celebrating the waterbirds and wetlands of the Peshurst District	\$7,400	Southern Grampians Shire
Culla-Pigeon ponds Land Management Group	Biodiverse Creature Corridors	\$19,827	Southern Grampians Shire
Mt Cole - Pyrenees Nature Group	Mt Cole: Haven is a Home - Raglan Recovery Stage 1	\$14,925	Pyrenees Shire
The Gringe Improvement Group	Hassall Creek Catchment Landcare Project	\$12,824	Southern Grampians Shire
Mooralla Landcare Group	Bringing biodiversity back - Mooralla 2024-2025	\$16,166	Southern Grampians Shire
Bulart Land Management Group	Protecting waterways and wetlands - Bulart 2024-2025	\$19,636	Southern Grampians Shire
Pierrepoint Land Protection Group	New technology treats old problems on Muddy Creek	\$6,250	Southern Grampians Shire
Hamilton to Coleraine Landcare Group Inc	The second stage of an impressive restoration of a section of the Grange Burn	\$16,739	Southern Grampians Shire
Hamilton Coleraine Rail Reserve Committee Inc.	Replanting the Redgum Track	\$4,960	Southern Grampians Shire
Gazette Land Action Group	Revegetating the Rises- creating wildlife corridors in Gazette's stoney landscape	\$14,987	Moyne Shire, Southern Grampians Shire
Upper Hopkins Land Management Group	Building Knowledge to Transform Landscapes	\$9,861	Ararat Rural City
Mirranatwa Landcare Group	Protecting waterways and Increasing Biodiversity in Mirranatwa 2024-2025	\$17,222	Southern Grampians Shire
Bunnugal Landcare Group	Protecting a Network of Wetlands within Prime Farming Country - Bunnugal 2024-2025	\$19,825	Southern Grampians Shire
Panyyabyr Landcare Group	Creating Connective Corridors to Boost Biodiversity - Panyyabyr 2024-2025	\$19,275	Southern Grampians Shire
Glenthompson Catchment Group	Connecting corridors across country to Burchetts Creek - Glenthompson 2024-2025	\$19,019	Southern Grampians Shire
Woorndoo Chatsworth Landcare Group	A demonstration native grass production area (SPA) for south-west Victoria	\$14,527	Moyne Shire
Upper Glenelg Landcare	Landcare Community Events	\$19,646	Glenelg Shire, Southern Grampians Shire, West Wimmera Shire
Friends of Forgotten Woodlands Inc.	Understanding genetic health of Banksia marginata Seed Production Areas across the VVP	\$19,308	Southern Grampians Shire
Panyyabyr Landcare Group	Finding Nature in the Southern Grampians	\$12,600	Southern Grampians Shire
Panyyabyr Landcare Group	Protecting Waterways, Revegetation and Restoring Growling Grass Frog Habitat along the Wannan River 2024-25 Panyyabyr	\$19,661	Southern Grampians Shire

# What's in your back paddock might be the grasslands we're seeking

Native grasslands are critically endangered across south-west Victoria's Volcanic Plain. Finding native grasslands on private property and assisting landholders to manage them is a priority for the Australian Government. Glenelg Hopkins CMA currently has funds available to landholders to assist in managing these areas.

Funding is available to manage native grasslands for biodiversity conservation alongside productive agriculture. Activities eligible for funding include:

- Fencing for improving grassland management
- Stock watering to support improved grassland grazing
- Pest plant and animal control
- Burning to maintain low fuel loads

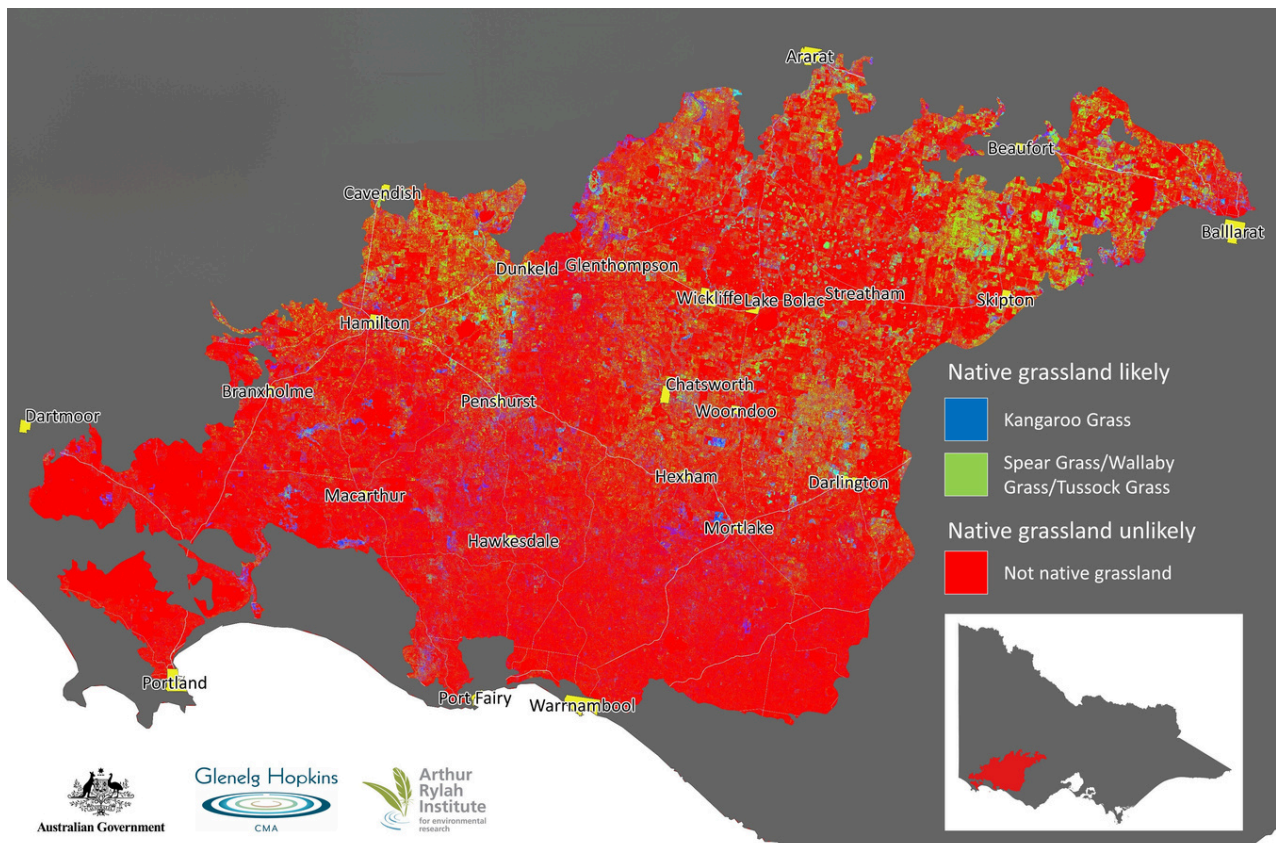
The map (right and below) shows the target area in red for funding and where native volcanic plain grasslands may occur.

If you think you may have native grasslands on your property, please get in touch. For more information contact Aggie and Ben at Glenelg Hopkins CMA by phoning (03) 5571 2526 or emailing: [a.stevenson@ghcma.vic.gov.au](mailto:a.stevenson@ghcma.vic.gov.au); or [b.zeeman@ghcma.vic.gov.au](mailto:b.zeeman@ghcma.vic.gov.au)



**Find us  
at Sheepvention  
to discuss!**

**Site 108-109 in the  
new shed**



## CMA NEWS:

# CMA staff lend a volunteering hand to local organisations

As part of the CMA's commitment to its local area, an organisation-wide volunteering effort took place in July, with 35 staff members taking the opportunity to volunteer at two Warrnambool organisations – Western District Food Share & Loved and Shared.

Staff donations included a whopping 89kg of food donations and numerous bags of pre-loved children's items.

Volunteering is an important way to help other people, groups and the community and many organisations rely on this support for daily functions. Instead of seeking volunteers for our community and on-ground works projects, GHCMA staff decided to turn the table and be the ones to volunteer!

Western District Food Share is a not-for-profit organisation which helps to distribute emergency food to over 70,000 people each year across SW Victoria. Supported by over 100 volunteers and 100 partner organisations, it is focused on reducing food waste and supporting individuals and families in need with essential food items. Donations of shelf-stable items are always welcome at the warehouse or supermarket drop-off points and can be as simple as donating a tin of baked beans!

Loved and Shared, another not-for-profit organisation, is built on the premise 'it takes a village to raise a child'. It provides community support and essential items including clothing, car seats, nursery and other children's goods to people and families experiencing hardship, ensuring people have access to essential resources while reducing the amount of goods sent to landfill. Pre-loved and used children's items in good condition are welcomed.



## CMA NEWS:

# Recognising long service to the CMA

The Glenelg Hopkins CMA recently held a whole of staff Integrated Staff Meeting at which time those staff who have been with the organisation for more than 10 years were recognised.

This year, CEO Adam Bester (centre) was recognised for his 15 years with the CMA.

Additionally, Kellie Nilsson-Osmond (right) and Gavin Prentice (right) were also recognised for their 10 years of service.

During the day, these staff were recognised for the significant project and organisational input they have had to the CMA over their time of employment.



## What sort of jobs can lead to employment at the CMA?

As part of the the Southern Grampians Jobs & Skills Pathways Expo held in Hamilton recently, the Glenelg Hopkins CMA took the opportunity to promote the diverse employment opportunities within the organisation.



From outdoor natural resource management activities, to business administration to waterway management, the opportunity to speak to Year 9 and 10 students from local schools at the expo was a great experience.

