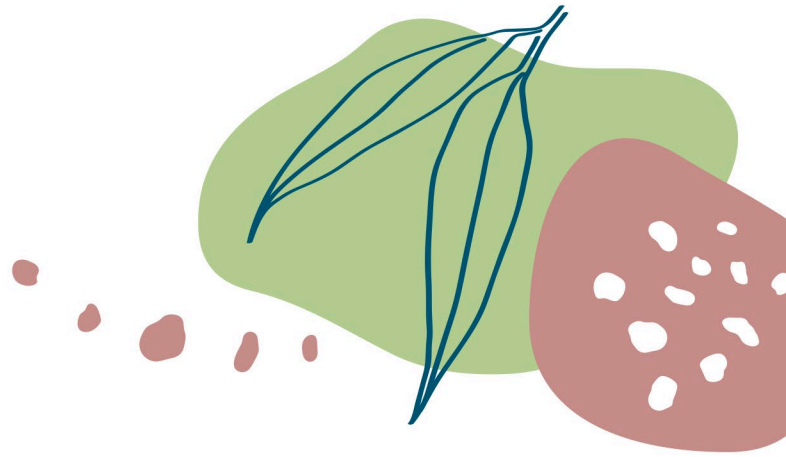


# Media Release



12 September 2024

## **\$6.5m PROJECT FUNDING FLOWS TO SUPPORT SPECIES**

The Glenelg Hopkins CMA will be delivering \$6.5 million in projects around the region over four years following the announcement of Natural Heritage Trust projects by the Australian Government this week.

Through the Australian Government's funding program, the CMA and its partners will deliver three projects to support grasslands of the Victorian Volcanic Plains; the South-Eastern Red-Tailed Black Cockatoo; and the Glenelg Estuary Discovery Bay area.

"We are thrilled this funding will allow a lot of long-term projects we have been investing in over a number of years to continue," Glenelg Hopkins CMA CEO, Adam Bester, said.

"A lot of these landscape-scale projects have been successfully delivering positive environmental outcomes for the very special areas and species in our region, like the beach birds which frequent the Glenelg Estuary Discovery Bay area, and the grassland plants of the Victorian Volcanic Plains, and to be able to continue this work is important for the long-term outcomes of these species."

The funding was announced by Minister for the Environment and Water Tanya Plibersek on Wednesday as part of the Australian Government's funding from both the \$224.5 million Saving Native Species Program and \$1.1 billion Natural Heritage Trust, with the projects announced across Australia taking a holistic approach to restoring landscapes and reducing habitat loss.

The Glenelg Estuary Discovery Bay Ramsar area between Portland and the South Australian border has received \$3 million to support the ongoing pest plant and animal control works, revegetation activities, migratory and beach bird monitoring and protection activities.

Glenelg Hopkins CMA will deliver this project with a number of partners including Parks Victoria, Greening Australia, Birdlife Australia, Deakin University and the Glenelg Estuary Discovery Bay Ramsar Coordinating Committee.

Supporting the protection and recovery of the grasslands of the Victorian Volcanic Plains has received \$2.5 million funding.

Project activities including offering stewardship payments to landholders with grassland areas on their properties for pest plant eradication and fencing, while other project activities will include undertaking cultural burns with Traditional Owners and local CFA groups, and revegetation and restoration of identified grassland areas.

This landscape-scale project is being delivered in partnership with the Arthur Rylah Institute, Eastern Maar Traditional Owner Aboriginal Corporation, Wadawurrung Traditional Owners Aboriginal Corporation, the Country Fire Authority, Victorian Department of Environment, Energy and Climate Action (DEECA), Regional Roads Victoria, and the Woorndoo Chatsworth Landcare Group.

The monitoring and revegetation of habitat for the South-eastern Red-Tailed Black Cockatoo will continue with an additional \$1 million provided to support the Glenelg Hopkins CMA and its project partners Birdlife Australia, Greening Australia and DEECA.

These projects are funded by the Australian Government Natural Heritage Trust and delivered by Glenelg Hopkins CMA, a member of the Commonwealth Regional Delivery Partners panel, and its project partners.

**ENDS**



**IMAGE CAPTIONS:**

*South-Eastern Red-Tailed Black Cockatoo. IMAGE Ben Zeeman.*

*Glenelg River Mouth estuary area. IMAGE Glenelg Hopkins CMA.*

*VVP Grasslands. IMAGE Ben Zeeman*

**All images available in higher resolution on request**